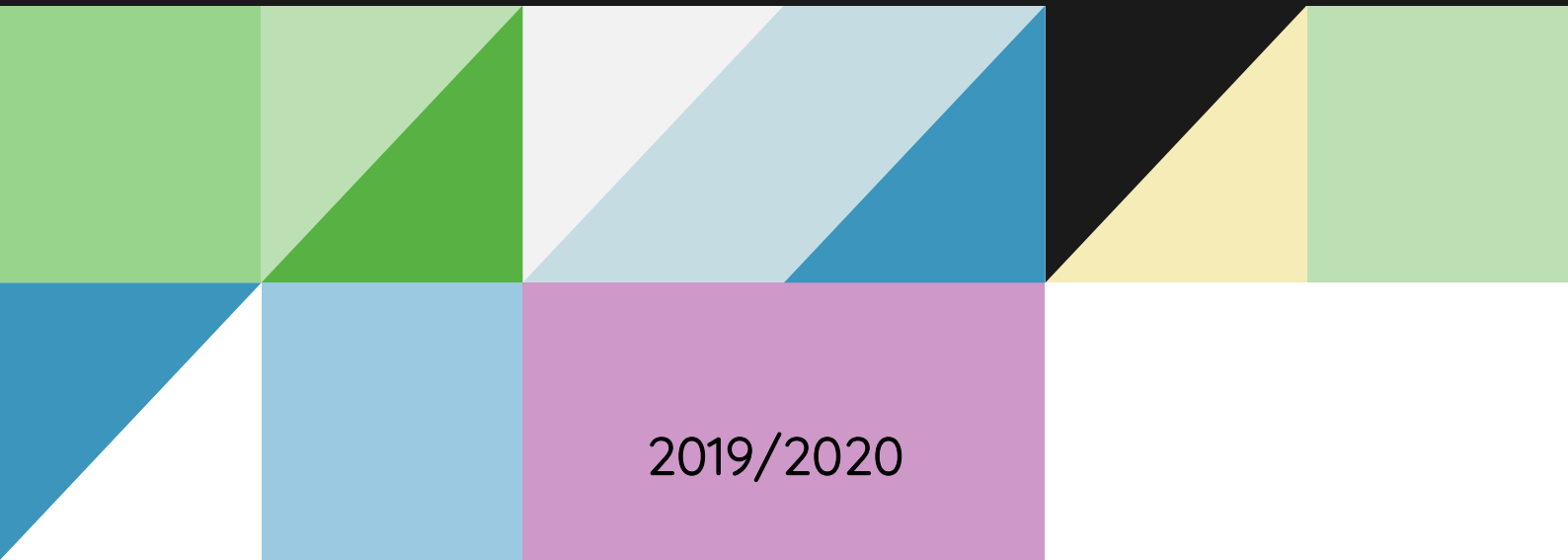


ETCHED



2019/2020

Flash on Clear glass



LF01



LF02



LF03



LF04



LF05



LF06



LF07



LF08



LF09



LF10



LF11

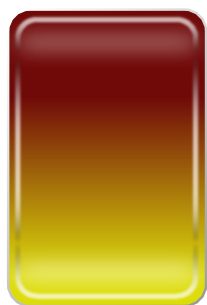


LF12

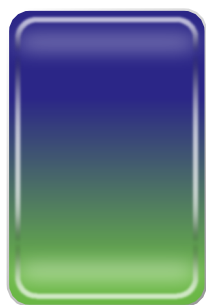


LF13

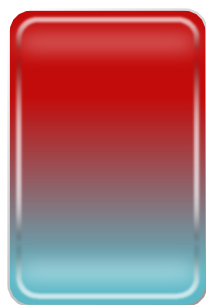
Flash on Colour glass



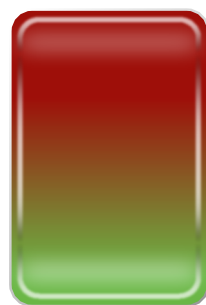
LF14



LF15

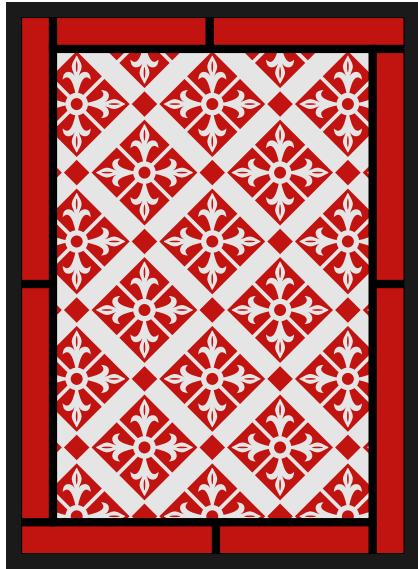


LF16



LF17

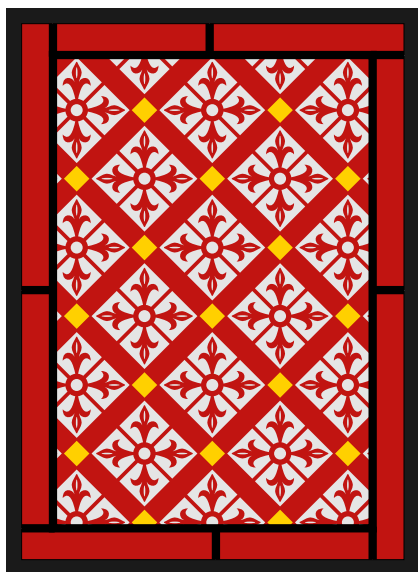
The variations of using a pattern



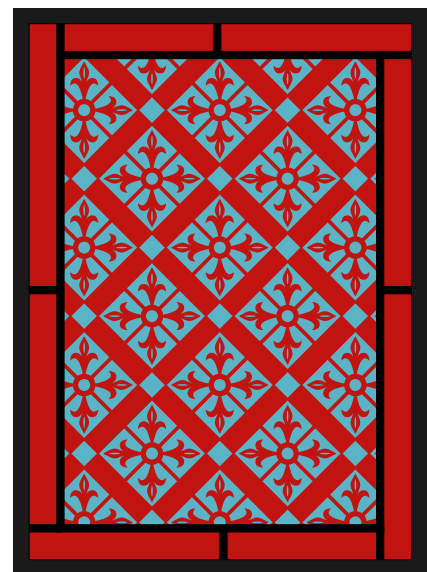
POSITIVE



NEGATIVE

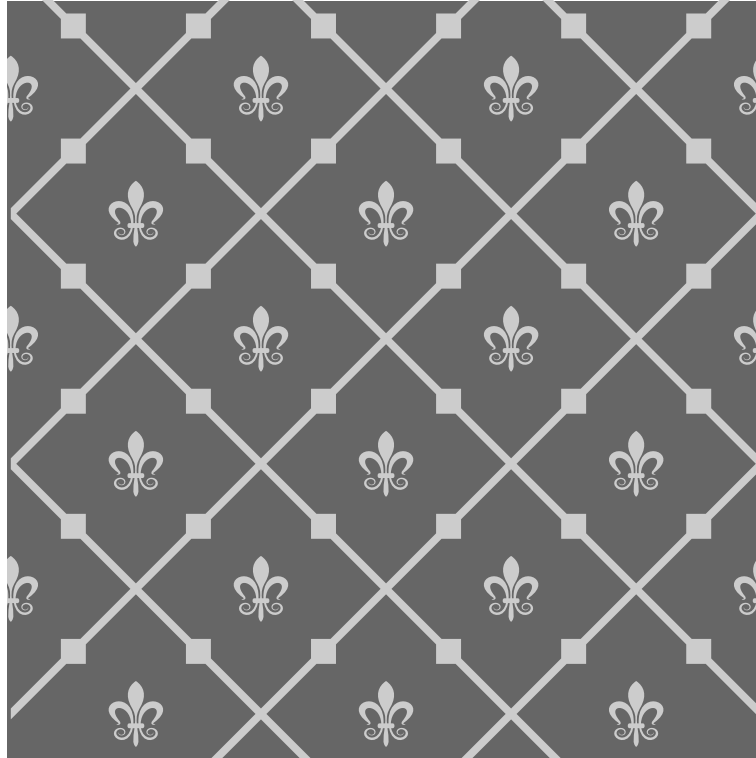


SILVER STAIN

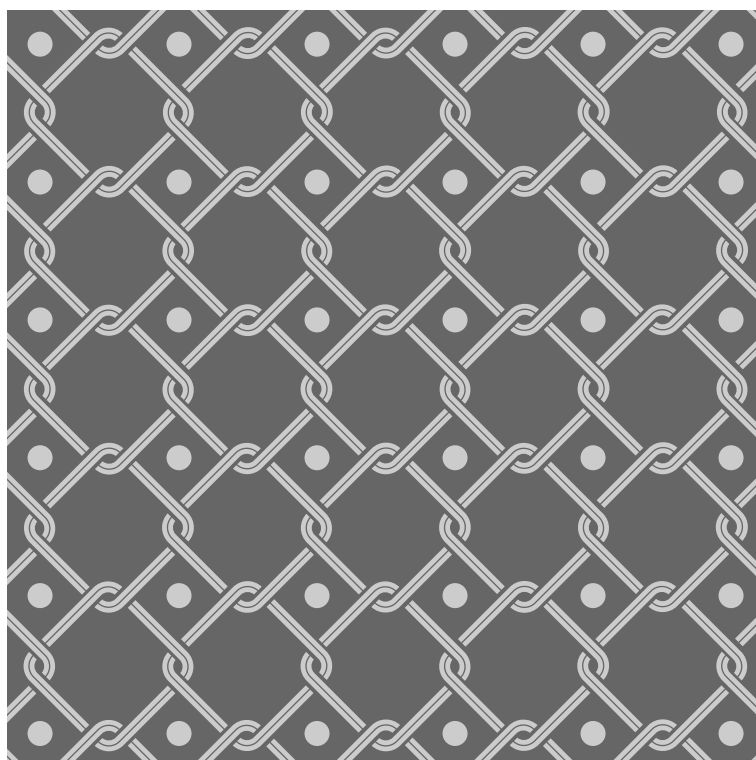


RED ON BLUE BASE

Geometric patterns

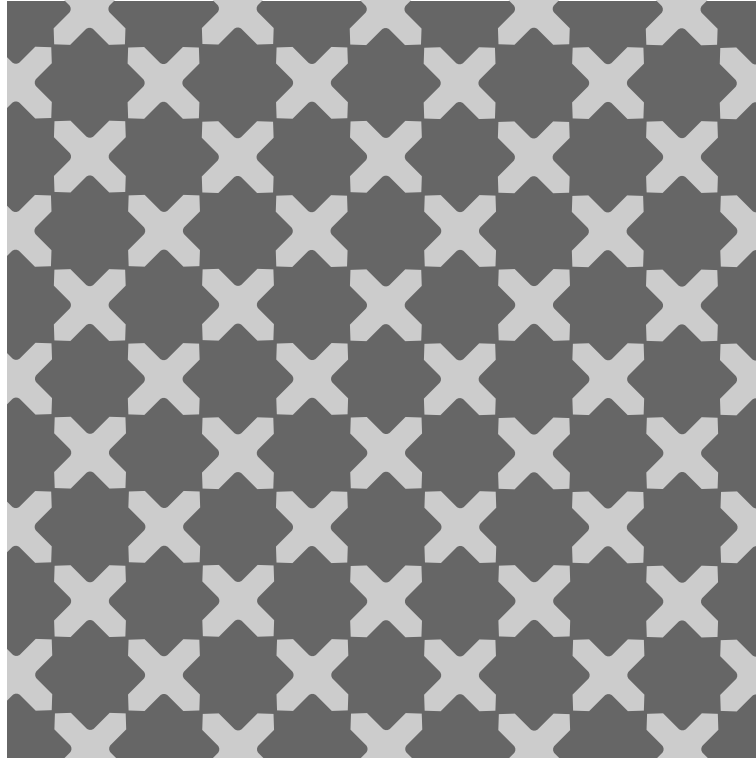


G1

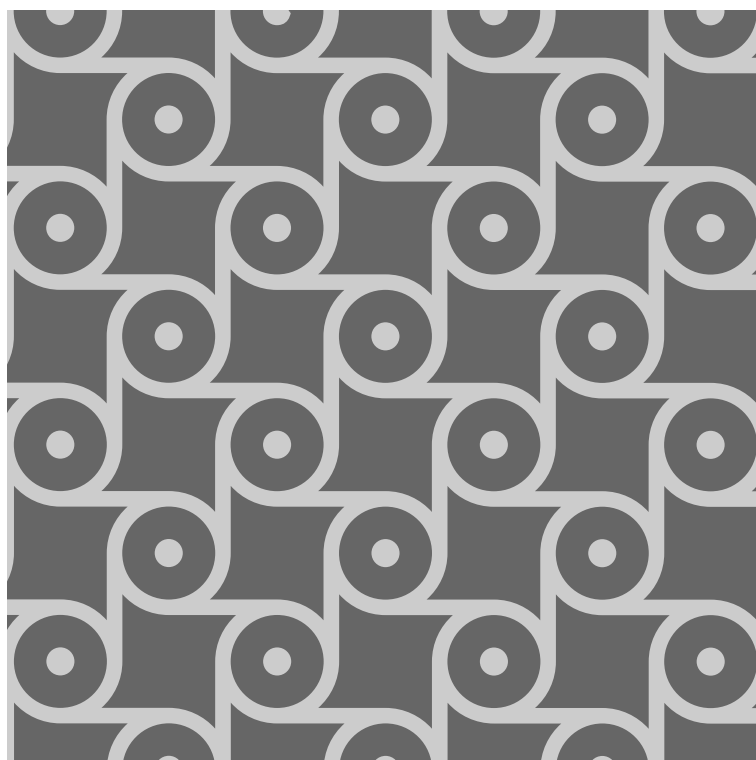


G2

Geometric patterns

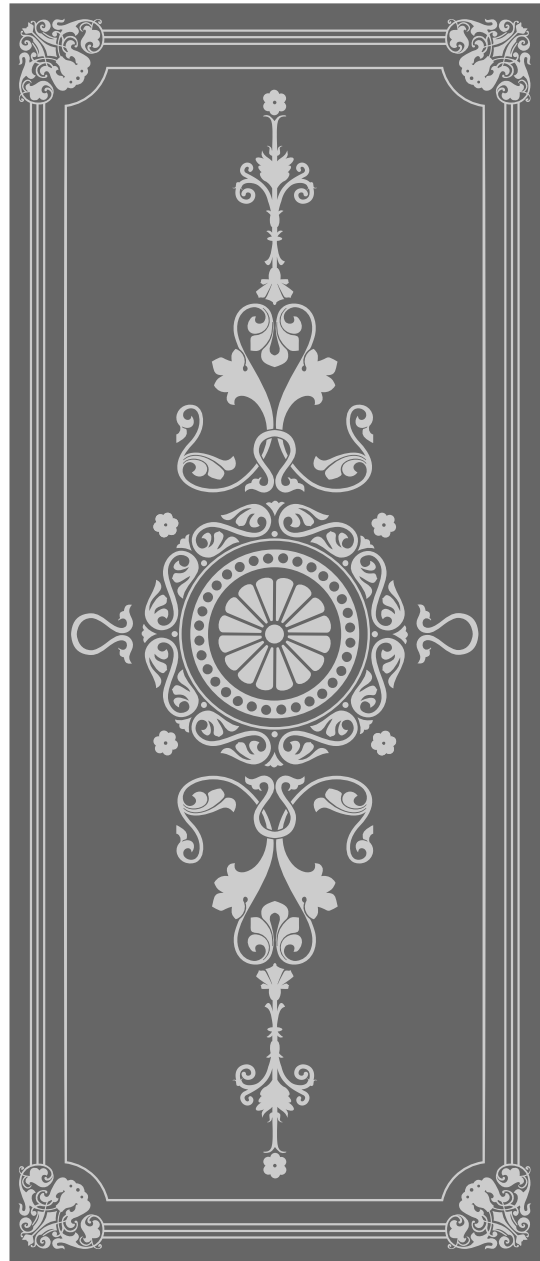


G3



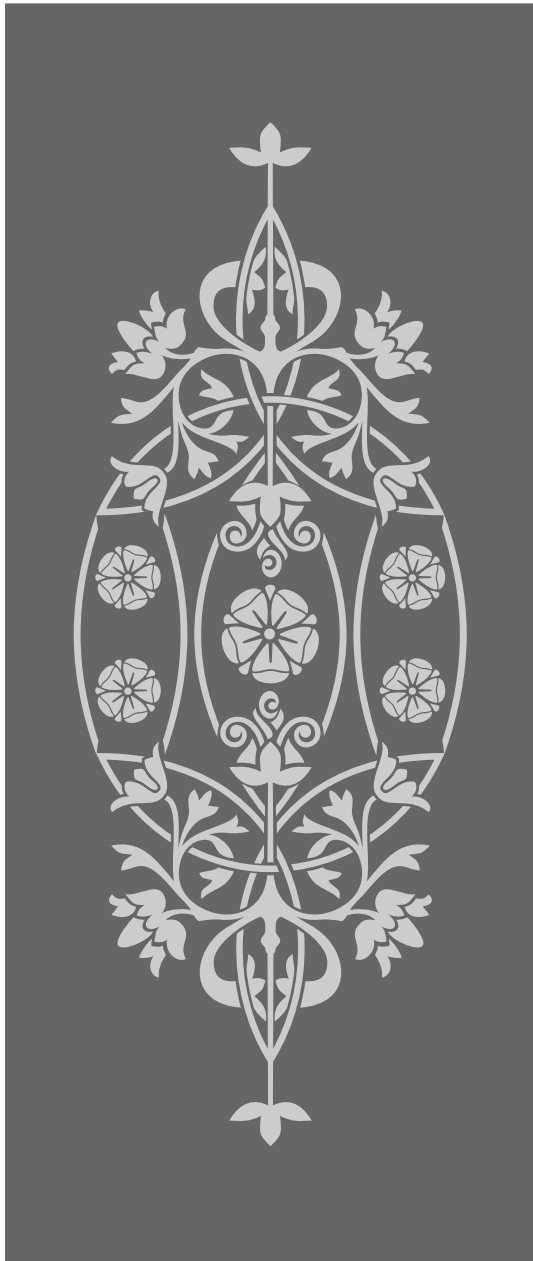
G4

Door patterns

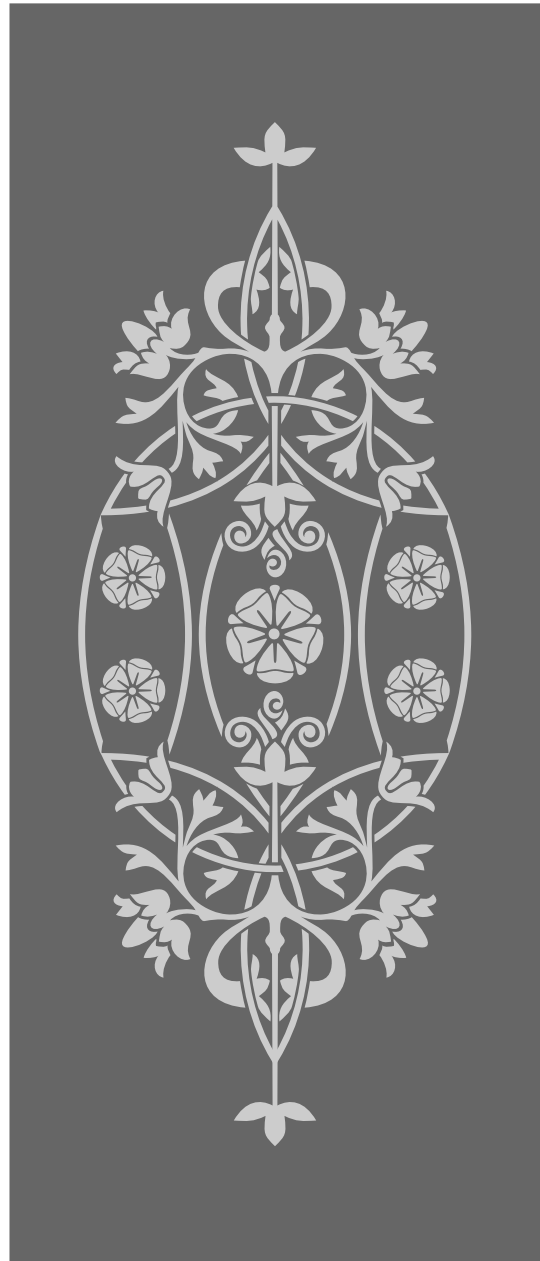


D1

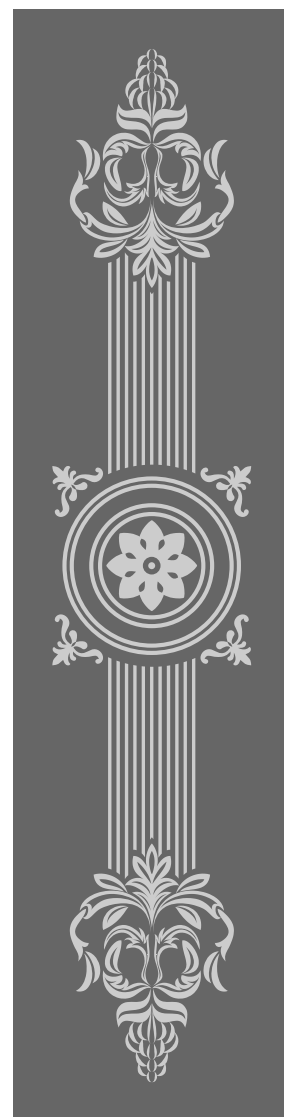
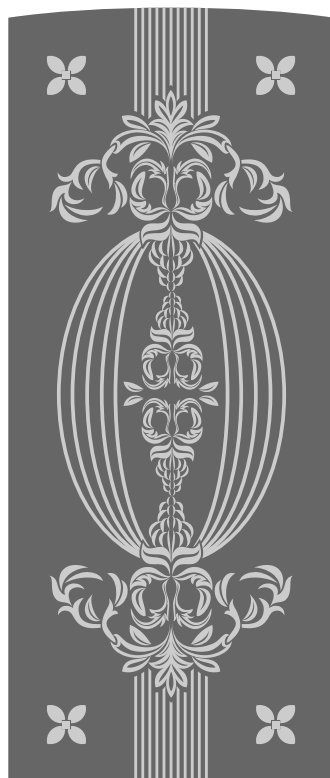
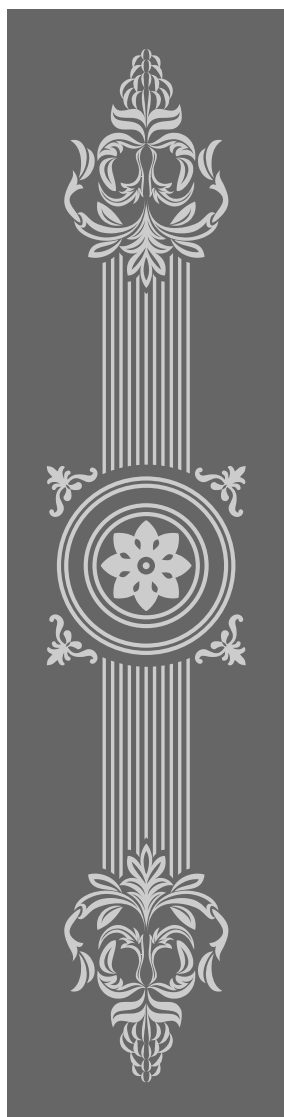
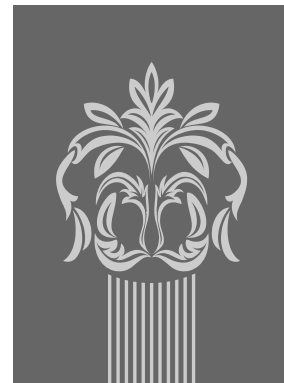
Door patterns



D2



Victorian front entrance patterns

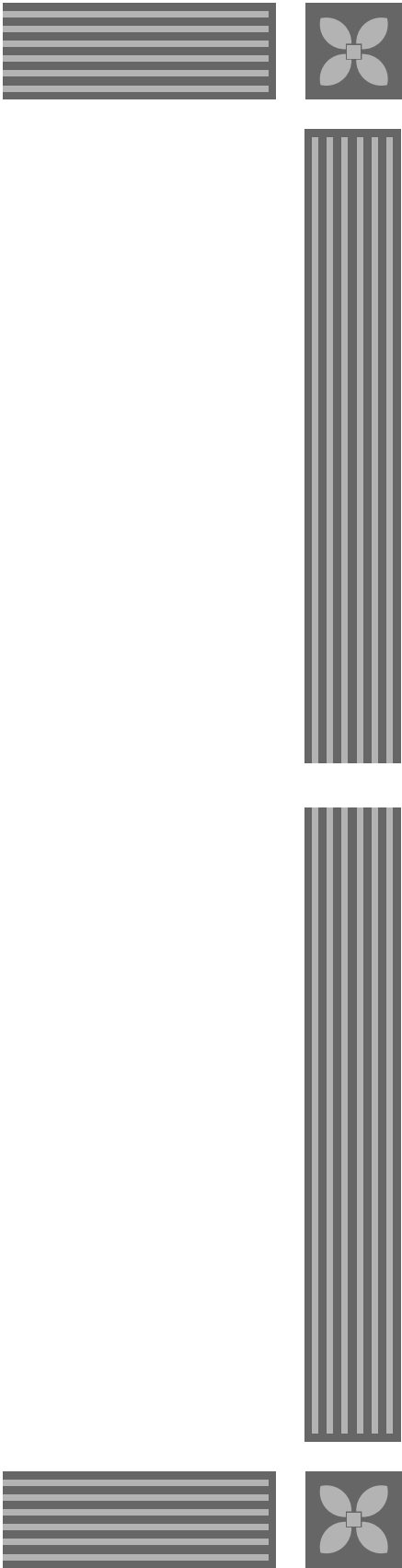


D3

Borders patterns



B1

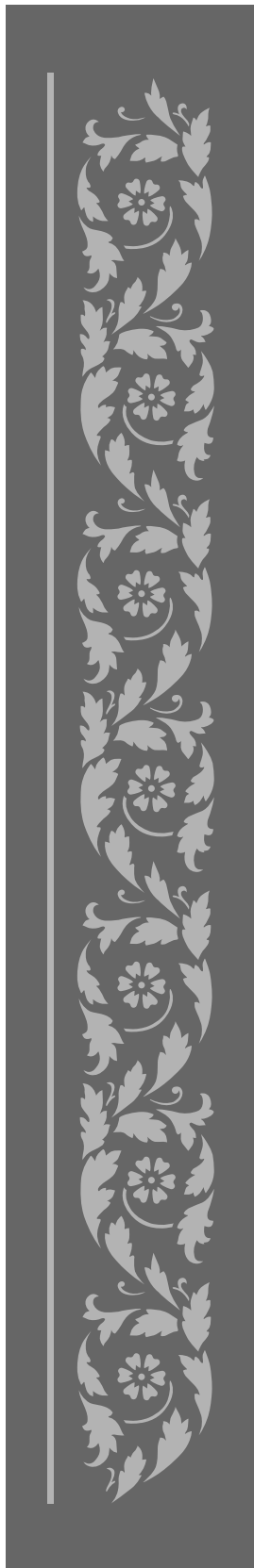


B2

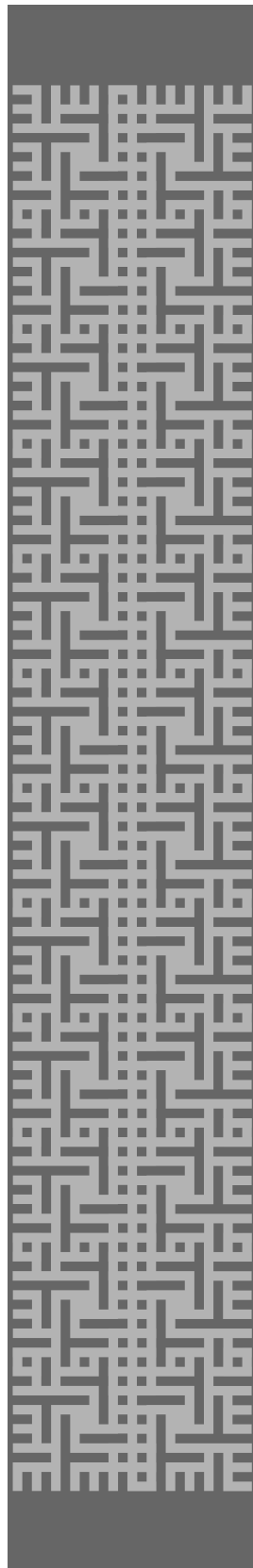
Borders patterns



B3



B4



B5



B6



Dear Customer,

Please notice that our patterns can be etched on any colour coated glass (flushed glass) as well as on painted glass. The range of available colours for coated glass is shown on page 1. Please be aware that the colours displayed on device screens look different to real glass colours. To make the right choice of glass, we advice to make an appointment in order to choose your colour from our glass sample set .

Each design can be adapted to your expectations. It is also possible to design any pattern that meets your expectations as well as the technological requirements.

Kind regards,
AT Glass Team





AT Glass
623-627 Kingston Rd
SW20 8SA
London

www.atglass.co.uk
e-mail: studio@atglass.co.uk
T: 07721 551801